



STYLE  
2701 / 2703 / 2705 / 2710

---

WEAVING  
EXCELLENCE  
WITH  
INNOVATION



| Code Color                   |                   | SOLAR OPTICAL PROPERTIES |    |    |    | SHGC/G VALUE<br>g-tot (glass & blind) |                    | SOLAR OPTICAL PROPERTIES |    |    |    | SHGC/G VALUE<br>g-tot (glass & blind) |                    |
|------------------------------|-------------------|--------------------------|----|----|----|---------------------------------------|--------------------|--------------------------|----|----|----|---------------------------------------|--------------------|
|                              |                   | TS                       | RS | AS | TV | SINGLE<br>1/4 CL                      | INSULATING<br>1 HA | TS                       | RS | AS | TV | SINGLE<br>1/4 CL                      | INSULATING<br>1 HA |
| <b>STYLE 2701 FACE - 1%</b>  |                   |                          |    |    |    | <b>STYLE 2701 BACK</b>                |                    |                          |    |    |    |                                       |                    |
| P12                          | Oyster            | 21                       | 64 | 15 | 17 | 0.31                                  | 0.23               | 21                       | 64 | 15 | 17 | 0.31                                  | 0.23               |
| P13                          | Oyster/Beige      | 15                       | 57 | 28 | 12 | 0.33                                  | 0.23               | 16                       | 56 | 28 | 13 | 0.40                                  | 0.28               |
| P14                          | Oyster/Pearl Gray | 8                        | 54 | 38 | 4  | 0.34                                  | 0.24               | 8                        | 33 | 59 | 6  | 0.53                                  | 0.35               |
| P28                          | Oyster/Charcoal   | 5                        | 39 | 56 | 6  | 0.41                                  | 0.28               | 4                        | 10 | 86 | 4  | 0.66                                  | 0.41               |
| P91                          | Oyster/Pewter     | 6                        | 43 | 51 | 6  | 0.39                                  | 0.26               | 5                        | 19 | 76 | 5  | 0.61                                  | 0.38               |
| P92                          | Oyster/Chestnut   | 6                        | 41 | 53 | 6  | 0.40                                  | 0.28               | 5                        | 13 | 82 | 5  | 0.64                                  | 0.40               |
| V21                          | Charcoal          | 3                        | 4  | 93 | 3  | 0.69                                  | 0.43               | 3                        | 4  | 93 | 3  | 0.69                                  | 0.43               |
| V22                          | Charcoal/Gray     | 3                        | 14 | 83 | 3  | 0.63                                  | 0.40               | 3                        | 6  | 91 | 3  | 0.68                                  | 0.42               |
| V64                          | Charcoal/Slate    | 4                        | 30 | 66 | 4  | 0.53                                  | 0.35               | 4                        | 10 | 86 | 4  | 0.66                                  | 0.41               |
| V65                          | Charcoal/Taupe    | 4                        | 25 | 71 | 3  | 0.56                                  | 0.36               | 4                        | 9  | 88 | 3  | 0.67                                  | 0.41               |
| V66                          | Charcoal/Brown    | 4                        | 17 | 78 | 4  | 0.62                                  | 0.39               | 4                        | 7  | 89 | 4  | 0.68                                  | 0.42               |
| <b>STYLE 2703 FACE - 3%</b>  |                   |                          |    |    |    | <b>STYLE 2703 BACK</b>                |                    |                          |    |    |    |                                       |                    |
| P12                          | Oyster            | 22                       | 62 | 16 | 19 | 0.32                                  | 0.23               | 22                       | 62 | 16 | 19 | 0.32                                  | 0.23               |
| P13                          | Oyster/Beige      | 15                       | 58 | 27 | 13 | 0.33                                  | 0.24               | 18                       | 33 | 49 | 16 | 0.55                                  | 0.35               |
| P14                          | Oyster/Pearl Gray | 9                        | 53 | 38 | 9  | 0.35                                  | 0.25               | 11                       | 49 | 40 | 10 | 0.43                                  | 0.30               |
| P28                          | Oyster/Charcoal   | 7                        | 40 | 53 | 8  | 0.42                                  | 0.28               | 6                        | 10 | 84 | 6  | 0.66                                  | 0.41               |
| P91                          | Oyster/Pewter     | 8                        | 44 | 48 | 9  | 0.40                                  | 0.27               | 8                        | 19 | 73 | 8  | 0.61                                  | 0.39               |
| P92                          | Oyster/Chestnut   | 7                        | 42 | 51 | 8  | 0.41                                  | 0.28               | 8                        | 14 | 78 | 8  | 0.64                                  | 0.40               |
| V21                          | Charcoal          | 5                        | 4  | 91 | 5  | 0.70                                  | 0.43               | 5                        | 4  | 91 | 5  | 0.70                                  | 0.43               |
| V22                          | Charcoal/Gray     | 5                        | 13 | 82 | 5  | 0.64                                  | 0.40               | 5                        | 6  | 89 | 5  | 0.68                                  | 0.42               |
| V64                          | Charcoal/Slate    | 7                        | 27 | 65 | 7  | 0.56                                  | 0.36               | 7                        | 10 | 83 | 7  | 0.67                                  | 0.41               |
| V65                          | Charcoal/Taupe    | 6                        | 24 | 70 | 6  | 0.58                                  | 0.37               | 6                        | 8  | 86 | 6  | 0.67                                  | 0.42               |
| V66                          | Charcoal/Brown    | 6                        | 17 | 77 | 6  | 0.62                                  | 0.39               | 6                        | 7  | 87 | 6  | 0.68                                  | 0.42               |
| <b>STYLE 2705 FACE - 5%</b>  |                   |                          |    |    |    | <b>STYLE 2705 BACK</b>                |                    |                          |    |    |    |                                       |                    |
| P12                          | Oyster            | 22                       | 62 | 16 | 20 | 0.32                                  | 0.23               | 22                       | 62 | 16 | 20 | 0.32                                  | 0.23               |
| P13                          | Oyster/Beige      | 23                       | 54 | 23 | 21 | 0.37                                  | 0.26               | 23                       | 48 | 29 | 21 | 0.47                                  | 0.31               |
| P14                          | Oyster/Pearl Gray | 19                       | 51 | 30 | 21 | 0.38                                  | 0.26               | 17                       | 34 | 49 | 16 | 0.54                                  | 0.35               |
| P28                          | Oyster/Charcoal   | 12                       | 40 | 48 | 14 | 0.43                                  | 0.29               | 11                       | 11 | 78 | 12 | 0.67                                  | 0.41               |
| P91                          | Oyster/Pewter     | 11                       | 46 | 43 | 12 | 0.39                                  | 0.27               | 13                       | 22 | 65 | 14 | 0.61                                  | 0.38               |
| P92                          | Oyster/Chestnut   | 12                       | 43 | 45 | 13 | 0.41                                  | 0.28               | 12                       | 20 | 68 | 12 | 0.62                                  | 0.39               |
| V21                          | Charcoal          | 7                        | 4  | 89 | 7  | 0.70                                  | 0.43               | 7                        | 4  | 89 | 7  | 0.70                                  | 0.43               |
| V22                          | Charcoal/Gray     | 8                        | 6  | 86 | 8  | 0.69                                  | 0.43               | 8                        | 12 | 80 | 8  | 0.65                                  | 0.41               |
| V64                          | Charcoal/Slate    | 9                        | 25 | 66 | 8  | 0.58                                  | 0.37               | 9                        | 9  | 83 | 8  | 0.68                                  | 0.42               |
| V65                          | Charcoal/Taupe    | 9                        | 21 | 70 | 8  | 0.60                                  | 0.38               | 9                        | 8  | 84 | 8  | 0.68                                  | 0.42               |
| V66                          | Charcoal/Brown    | 9                        | 16 | 75 | 8  | 0.64                                  | 0.40               | 9                        | 7  | 85 | 8  | 0.69                                  | 0.42               |
| <b>STYLE 2710 FACE - 10%</b> |                   |                          |    |    |    | <b>STYLE 2710 BACK</b>                |                    |                          |    |    |    |                                       |                    |
| P12                          | Oyster            | 34                       | 54 | 12 | 32 | 0.39                                  | 0.27               | 34                       | 54 | 12 | 32 | 0.39                                  | 0.27               |
| P13                          | Oyster/Beige      | 29                       | 51 | 20 | 28 | 0.40                                  | 0.27               | 29                       | 47 | 24 | 28 | 0.49                                  | 0.32               |
| P28                          | Oyster/Charcoal   | 21                       | 37 | 42 | 24 | 0.46                                  | 0.30               | 20                       | 17 | 63 | 21 | 0.65                                  | 0.40               |
| P91                          | Oyster/Pewter     | 24                       | 43 | 33 | 25 | 0.44                                  | 0.29               | 21                       | 25 | 54 | 23 | 0.61                                  | 0.38               |
| P92                          | Oyster/Chestnut   | 25                       | 41 | 34 | 26 | 0.45                                  | 0.30               | 22                       | 20 | 58 | 23 | 0.64                                  | 0.40               |
| V21                          | Charcoal          | 15                       | 4  | 81 | 15 | 0.72                                  | 0.44               | 15                       | 3  | 81 | 15 | 0.72                                  | 0.44               |
| V22                          | Charcoal/Gray     | 15                       | 10 | 76 | 14 | 0.68                                  | 0.42               | 15                       | 5  | 80 | 14 | 0.71                                  | 0.43               |
| V64                          | Charcoal/Slate    | 15                       | 16 | 69 | 15 | 0.65                                  | 0.40               | 15                       | 7  | 78 | 15 | 0.70                                  | 0.43               |
| V65                          | Charcoal/Taupe    | 15                       | 17 | 69 | 14 | 0.64                                  | 0.40               | 15                       | 7  | 78 | 14 | 0.70                                  | 0.43               |
| V66                          | Charcoal/Brown    | 14                       | 12 | 74 | 14 | 0.67                                  | 0.41               | 14                       | 6  | 80 | 14 | 0.71                                  | 0.43               |

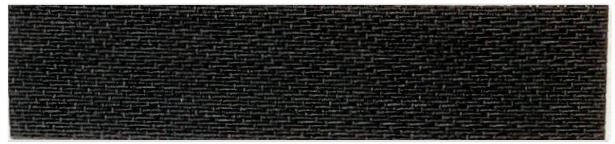
TS = Solar Transmittance | RS = Solar Reflectance | AS = Solar Absorptance | TV = Visual Transmittance | SHGC = Solar Heat Gain Coefficient  
1/4 CL = 1/4" Clear Glass | 1 HA = 1" Heat Absorbing Glass | Fabrics Installed Internally | Zero-Degree Profile Angle  
For additional performance values, test references and technical definitions visit us at [www.phifer.com](http://www.phifer.com).



P12 Oyster



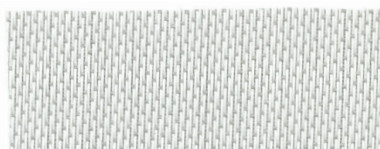
**NEW**  
V21 Charcoal



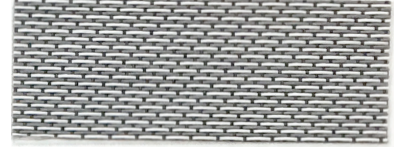
P13 Oyster / Beige - face  
Oyster / Beige - back



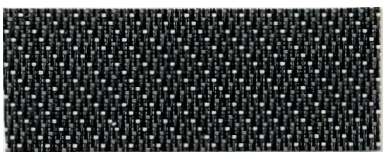
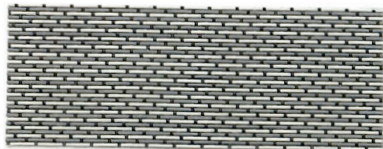
P14\* Oyster / Pearl Gray - face  
Oyster / Pearl Gray - back



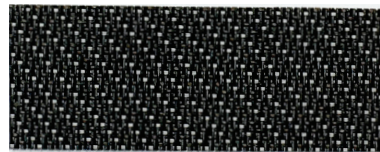
**NEW**  
V64 Charcoal / Slate - face  
Charcoal / Slate - back



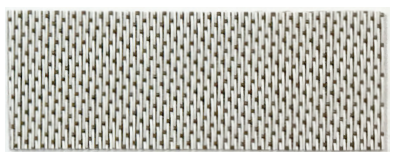
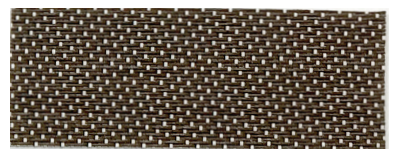
**NEW**  
V65 Charcoal / Taupe - face  
Charcoal / Taupe - back



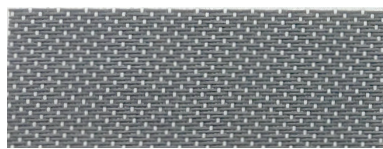
**NEW**  
V66 Charcoal / Brown - face  
Charcoal / Brown - back



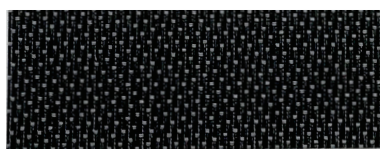
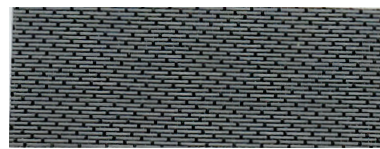
P92 Oyster / Chestnut - face  
Oyster / Chestnut - back



P91 Oyster / Pewter - face  
Oyster / Pewter - back



**NEW**  
V22 Charcoal / Gray - face  
Charcoal / Gray - back



P28 Oyster / Charcoal - face  
Oyster / Charcoal - back



\*Colors may vary based on individual computer settings and should only be used for general reference.

PROTECTION THAT LIVES ON  
**MICROBAN**

Microban® antimicrobial protection inhibits the growth of stain-causing bacteria, mold and mildew on the shade.



PRODUCT CERTIFIED FOR  
LOW CHEMICAL EMISSIONS  
UL.COM/GG  
UL 2818



MIF Seal  
of Approval



\* P14 Oyster / Pearl Gray currently available in 2701, 2703 and 2705

# STYLE 2701 / 2703 / 2705 / 2710 SPECIFICATIONS

Styles 2701, 2703, 2705 and 2710 are woven from a unique twill pattern that displaces the individual yarns to create a two-sided fabric for maximum performance in heat reduction, glare reduction and improved visibility. Style 2701/2703/2705/2710 can also be used in exterior roller shades.

|                            |  |                                       |
|----------------------------|--|---------------------------------------|
| <b>FIRE CLASSIFICATION</b> | NFPA 701 TM#1 (small scale)            | BS 5867 Part 2 Type B Performance     |
|                            | NFPA 701 TM#2 (large scale)            | CAN/ULC-S 109 (large and small scale) |
|                            | NFPA 101 (Class A Rating)              | CAN/CGSB2-4.162-M80                   |
|                            | California U.S. Title 19 (small scale) | IBC Section 803.1.1 (Class A Rating)  |

*Fire classifications are subject to change. It is the user's responsibility to check for the most current fire ratings at [phifer.com](http://phifer.com).*

|                                       |   |                 |                                |             |          |
|---------------------------------------|---|-----------------|--------------------------------|-------------|----------|
| <b>BACTERIA AND FUNGAL RESISTANCE</b> | ASTM E 2180   | ASTM G21        | AATCC30 Part 3                 | ASTM D 3273 | ASTM G22 |
|                                       | GREENGUARD Mold and Bacteria Standard ASTM 6329 includes Microban antimicrobial additives   |                 |                                |             |          |
| <b>ENVIRONMENTAL CERTIFICATION</b>    | GREENGUARD  | GREENGUARD Gold |                                |             |          |
|                                       | Certified to these standards for low chemical emissions into indoor air during product usage  |                 |                                |             |          |
| <b>LEAD FREE</b>                      | RoHS/Directive 2002/95/EC   |                 | REACH (EC 1907/2006) compliant |             |          |
|                                       | ANSI/WCMA A 100.1-2007 for lead content   |                 |                                |             |          |
|                                       | US Consumer Product Safety Commission Section 101   |                 |                                |             |          |
| <b>WARRANTY</b>                       | 10-year interior  | 5-year exterior |                                |             |          |
| <b>ACOUSTICAL PERFORMANCE</b>         | NRC (Noise Reduction Coefficient) and SAA (Sound Absorption Average) tested in accordance with ASTM C423-09a  |                 |                                |             |          |
| <b>UV PROTECTION</b>                  | Seal of Approval by the Melanoma International Foundation (MIF) for effectiveness in preventing sun damage to the skin or eyes  |                 |                                |             |          |
| <b>TRACKLESS</b>                      | TrackLess Technology minimizes the fiberglass yarns' inherent tendencies to track when being rolled up in a shade. With TrackLess Technology these same fabrics now track less, roll up straighter and reduce shade fabrication time. |                 |                                |             |          |

| STYLE                   | 2701   | 2703   | 2705   | 2710  |
|-------------------------|--|--|--|---|
| <b>WIDTHS</b>           | 63", 98" and 126"<br>160 cm, 248.9 cm and 320 cm | 63", 98" and 126"<br>160 cm, 248.9 cm and 320 cm | 63", 98" and 126"<br>160 cm, 248.9 cm and 320 cm | 63" and 98"<br>160 cm and 248.9 cm              |
| <b>ROLL LENGTH</b>      | 30 Linear Yards<br>27.4 m                        | 30 Linear Yards<br>27.4 m                        | 30 Linear Yards<br>27.4 m                        | 30 Linear Yards<br>27.4 m                       |
| <b>COMPOSITION</b>      | 36% Fiberglass<br>64% Vinyl on Fiberglass        | 36% Fiberglass<br>64% Vinyl on Fiberglass        | 34% Fiberglass<br>66% Vinyl on Fiberglass        | 34% Fiberglass<br>66% Vinyl on Fiberglass       |
| <b>MESH WEIGHT</b>      | 14.6 oz/yd <sup>2</sup><br>495 g/m <sup>2</sup>  | 14.0 oz/yd <sup>2</sup><br>475 g/m <sup>2</sup>  | 11.8 oz/yd <sup>2</sup><br>379 g/m <sup>2</sup>  | 10.4 oz/yd <sup>2</sup><br>353 g/m <sup>2</sup> |
| <b>FABRIC THICKNESS</b> | 0.027 in<br>0.66 mm                              | 0.028 in<br>0.71 mm                              | 0.025 in<br>0.64 mm                              | 0.025 in<br>0.64 mm                             |
| <b>OPENNESS FACTOR</b>  | Approximately 1%                                 | Approximately 3%                                 | Approximately 5%                                 | Approximately 10%                               |
| <b>UV BLOCKAGE</b>      | Approximately 99%                                | Approximately 97%                                | Approximately 95%                                | Approximately 90%                               |
| <b>ACOUSTICAL VALUE</b> | NRC .15 / SAA .15                                | NRC .10 / SAA .09                                | NRC .05 / SAA .06                                | NRC .05 / SAA .05                               |

**PHIFER**  
INCORPORATED

P. O. Box 1700 • Tuscaloosa, Alabama 35403 -1700 USA  
Phone: 205.345.2120 • FAX: 205.391.0799  
Toll Free USA/Canada: 1.800.221.5497  
[phifer.com](http://phifer.com) • ISO Registered



© SheerWeave is a registered trademark of PHIFER INCORPORATED.  
© MICROBAN is a registered trademark of Microban Products Company.  
™ UL, the UL logos and the UL mark are trademarks of UL LLC.  
Photo courtesy of Draper INC., Spiceland, Indiana, USA.  
© PHIFER INCORPORATED V18B 101718 3033833