



STYLE
4400 / 4000 / 4100
with DOW ECOLIBRIUM™
Bio-based Plasticizer

WEAVING
EXCELLENCE
WITH
INNOVATION



The DOW ECOLIBRIUM Value Proposition:

DOW ECOLIBRIUM™ Bio-Based Plasticizers offer a renewable alternative that is phthalate-free, offering a more sustainable option while having the same great performance and feel of current materials.

- Lowers greenhouse gas emissions as much as 40% vs. existing PVC compounds
- 98% of the plasticizer is derived from non fossil fuel based feed stock.
- Lower carbon footprint*
- Phthalate-free
- LEED credits for rapidly renewable content may be available**
- RoHS compliant
- Ability for compound to be recycled in a standard vinyl stream
- Maintains all of the established benefits of traditional vinyl such as durability, cleanability and fabric longevity

*Based on Lifecycle Analysis (LCA) conducted by The Dow Chemical Company and third party reviewed.
**See website www.usgbc.org for more information.

| Code | Color | SOLAR OPTICAL PROPERTIES | | | | SHGC/G VALUE | |
|-------------------------|-----------------|--------------------------|----|----|----|---------------|-----------------|
| | | TS | RS | AS | TV | SINGLE 1/4 CL | INSULATING 1 HA |
| STYLE 4400 - 3% | | | | | | | |
| U58 | Eco/Chalk | 12 | 70 | 18 | 7 | 0.26 | 0.13 |
| U59 | Eco/Alabaster | 10 | 62 | 28 | 6 | 0.30 | 0.15 |
| U60 | Eco/Pebblestone | 9 | 51 | 40 | 6 | 0.37 | 0.24 |
| U61 | Eco/Greystone | 6 | 39 | 55 | 5 | 0.42 | 0.28 |
| U62 | Eco/Granite | 6 | 48 | 46 | 5 | 0.37 | 0.17 |
| U63 | Eco/Pewter | 3 | 26 | 71 | 2 | 0.49 | 0.22 |
| U64 | Eco/Ash | 3 | 10 | 87 | 4 | 0.57 | 0.36 |
| U65 | Eco/Ebony | 3 | 3 | 94 | 3 | 0.61 | 0.37 |
| U66 | Eco/Tobacco | 3 | 5 | 92 | 3 | 0.60 | 0.37 |
| STYLE 4000 - 5% | | | | | | | |
| U58 | Eco/Chalk | 16 | 68 | 16 | 12 | 0.28 | 0.22 |
| U59 | Eco/Alabaster | 15 | 57 | 28 | 13 | 0.34 | 0.24 |
| U60 | Eco/Pebblestone | 14 | 49 | 37 | 12 | 0.38 | 0.26 |
| U61 | Eco/Greystone | 10 | 34 | 56 | 9 | 0.45 | 0.21 |
| U62 | Eco/Granite | 11 | 41 | 48 | 10 | 0.42 | 0.20 |
| U63 | Eco/Pewter | 8 | 27 | 65 | 9 | 0.49 | 0.31 |
| U64 | Eco/Ash | 7 | 11 | 82 | 8 | 0.57 | 0.26 |
| U65 | Eco/Ebony | 6 | 5 | 89 | 8 | 0.60 | 0.37 |
| U66 | Eco/Tobacco | 7 | 5 | 88 | 8 | 0.61 | 0.27 |
| STYLE 4100 - 10% | | | | | | | |
| U58 | Eco/Chalk | 18 | 66 | 16 | 15 | 0.30 | 0.22 |
| U59 | Eco/Alabaster | 19 | 56 | 25 | 16 | 0.36 | 0.25 |
| U60 | Eco/Pebblestone | 16 | 48 | 36 | 15 | 0.39 | 0.27 |
| U61 | Eco/Greystone | 14 | 35 | 51 | 14 | 0.46 | 0.30 |
| U62 | Eco/Granite | 15 | 42 | 43 | 14 | 0.43 | 0.20 |
| U63 | Eco/Pewter | 12 | 26 | 62 | 14 | 0.50 | 0.32 |
| U64 | Eco/Ash | 10 | 10 | 80 | 11 | 0.58 | 0.27 |
| U65 | Eco/Ebony | 10 | 4 | 86 | 11 | 0.62 | 0.37 |
| U66 | Eco/Tobacco | 10 | 5 | 85 | 11 | 0.61 | 0.28 |



Microban® antimicrobial protection inhibits the growth of stain-causing bacteria, mold and mildew on the shade.



PRODUCT CERTIFIED FOR LOW CHEMICAL EMISSIONS
UL.COM/GG
UL 2818



MIF Seal of Approval



TS = Solar Transmittance
RS = Solar Reflectance
AS = Solar Absorptance
TV = Visual Transmittance

SHGC = Solar Heat Gain Coefficient

1/4 CL = 1/4" Clear Glass
1 HA = 1" Heat Absorbing Glass

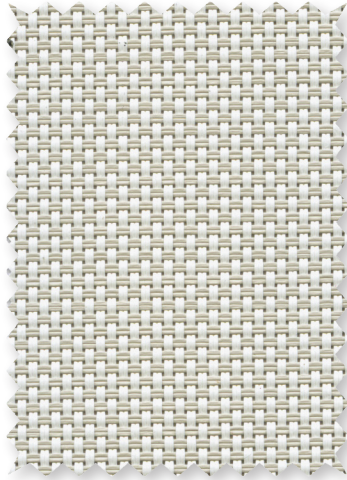
Fabrics Installed Internally
Zero-Degree Profile Angle

For additional performance values, test references and technical definitions visit us at www.phifer.com.

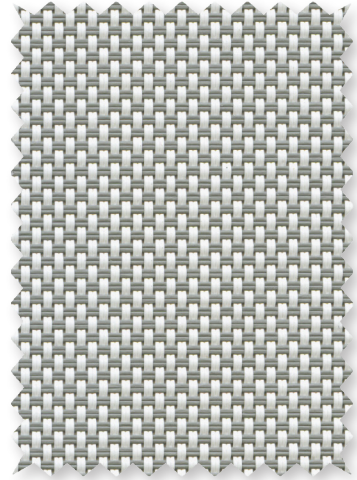
U58 Eco/Chalk



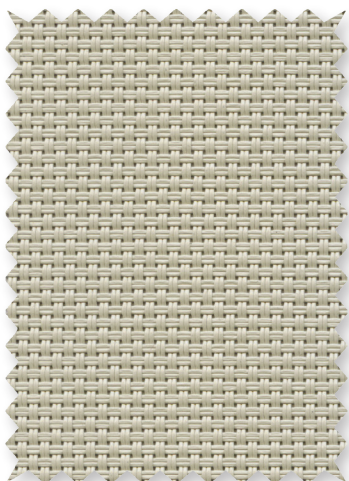
U59 Eco/Alabster



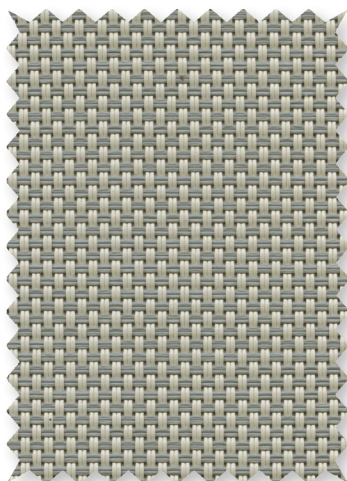
U62 Eco/Granite



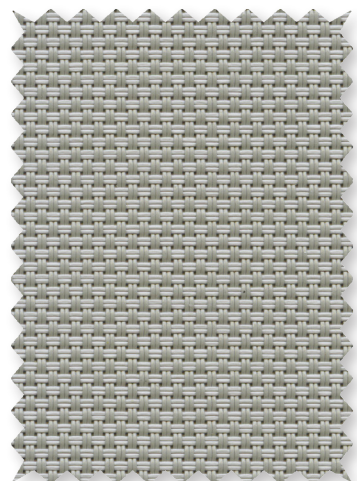
U60 Eco/Pebblestone



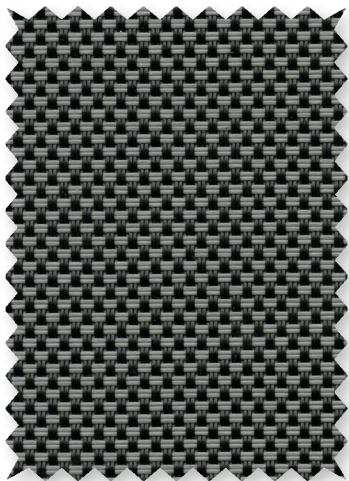
U61 Eco/Greystone



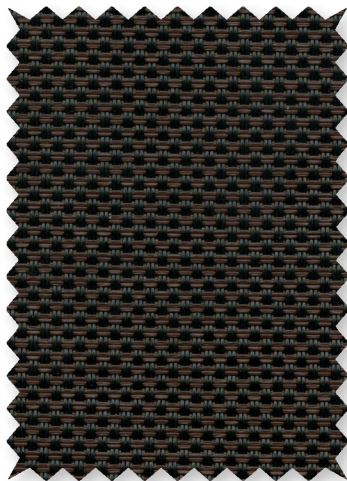
U63 Eco/Pewter



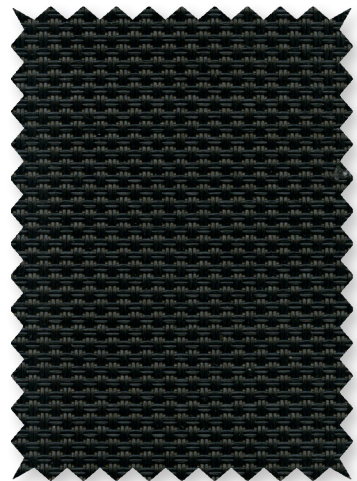
U64 Eco/Ash



U66 Eco/Tobacco



U65 Eco/Ebony



STYLE 4400 / 4000 / 4100 SPECIFICATIONS

As the only sun control fabrics in the market to use DOW's unique ECOLIBRIUM bio-based plasticizer, Styles 4400, 4000 and 4100 combine the durability of vinyl coated polyester with the latest in green PVC technology. ECOLIBRIUM is a renewable alternative to traditional plasticizers that lowers greenhouse gas emissions as much as 40% vs existing PVC compounds. Style 4400/4000/4100 with DOW ECOLIBRIUM is phthalate-free, lead-free and RoHS compliant. These fabrics maintain all of the established benefits of traditional vinyl such as durability, cleanability and fabric longevity. Style 4400/4000/4100 can also be used in exterior shading systems.

| | | |
|----------------------------|--|---------------------------------------|
| FIRE CLASSIFICATION | California U.S. Title 19 (small scale) | NFPA 701 TM#1 (small scale) |
| | NFPA 101 (Class A Rating) | IBC Section 803.1.1 (Class A Rating) |
| | BS 5867 Part 2 Type B Performance | CAN/ULC-S 109 (large and small scale) |
| | NFPA 701 TM#2 (large scale) | CAN/CGSB2-4.162-M80 |

Fire classifications are subject to change. Please go to phifer.com for the most current information.

| | | | | |
|---------------------------------------|--|-----------------|--------------------------------|-------------|
| BACTERIA AND FUNGAL RESISTANCE | ASTM E 2180 | ASTM G21 | AATCC30 Part 3 | ASTM D 3273 |
| | GREENGUARD Mold and Bacteria Standard ASTM 6329 includes Microban antimicrobial additives | | | |
| ENVIRONMENTAL CERTIFICATION | GREENGUARD | GREENGUARD Gold | | |
| | Certified to these standards for low chemical emissions into indoor air during product usage DOW ECOLIBRIUM Plasticizer is a USDA Certified Bio-Based Product | | | |
| LEAD FREE | RoHS/Directive 2002/95/EC ANSI/WCMA A 100.1-2007 for lead content US Consumer Product Safety Commission Section 101 | | REACH (EC 1907/2006) compliant | |
| WARRANTY | 10-year interior | 5-year exterior | | |
| ACOUSTICAL PERFORMANCE | NRC (Noise Reduction Coefficient) and SAA (Sound Absorption Average) tested in accordance with ASTM C423-09a | | | |
| UV PROTECTION | Seal of Approval by the Melanoma International Foundation (MIF) for effectiveness in preventing sun damage to the skin or eyes | | | |

| STYLE | 4400 | 4000 | 4100 |
|-------------------------|--|--|--|
| WIDTHS | 63", 84", 98" and 126" 160 cm, 213.4 cm, 248.9 cm and 320 cm | 63", 84", 98" and 126" 160 cm, 213.4 cm, 248.9 cm and 320 cm | 63", 84" and 98" 160 cm, 213.4 cm and 248.9 cm |
| ROLL LENGTH | 30 Linear Yards 27.4 m | 30 Linear Yards 27.4 m | 30 Linear Yards 27.4 m |
| COMPOSITION | 25% Polyester 75% Vinyl on Polyester | 25% Polyester 75% Vinyl on Polyester | 25% Polyester 75% Vinyl on Polyester |
| | (Over 50% of compound components are derived from crop-based feed stocks and minerals. Over 2/3 of total compound is derived from non fossil fuel based materials.) | | |
| MESH WEIGHT | 19.9 oz/yd ² 675 g/m ² | 18.0 oz/yd ² 610 g/m ² | 16.7 oz/yd ² 566 g/m ² |
| FABRIC THICKNESS | 0.034 in 0.86 mm | 0.032 in 0.81 mm | 0.032 in 0.81 mm |
| OPENNESS FACTOR | Approximately 3% | Approximately 5% | Approximately 10% |
| UV BLOCKAGE | Approximately 97% | Approximately 95% | Approximately 90% |
| ACOUSTICAL VALUE | NRC .20 / SAA .19 | NRC .10 / SAA .11 | NRC .05 / SAA .05 |

PHIFER
INCORPORATED

P. O. Box 1700 • Tuscaloosa, Alabama 35403 -1700 USA
Phone: 205.345.2120 • FAX: 205.391.0799
Toll Free USA/Canada: 1.800.221.5497
phifer.com • ISO Registered



© SheerWeave is a registered trademark of PHIFER INCORPORATED.
© TM ECOLIBRIUM and the DOW Diamond are trademarks of The Dow Chemical Company ("Dow") or an affiliated company of Dow.
© MICROBAN is a registered trademark of Microban Products Company.
™ UL, the UL logos and the UL mark are trademarks of UL LLC.
© PHIFER INCORPORATED V18B 112618 3033834