



STYLE
4901 / 4903

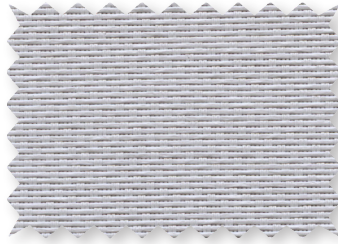
WEAVING
EXCELLENCE
WITH
INNOVATION



P06 Chalk



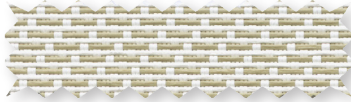
Q27 Soft Grey



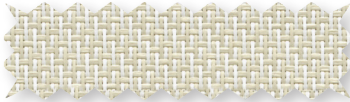
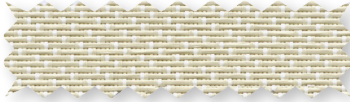
V10 Ebony



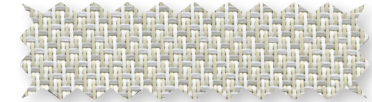
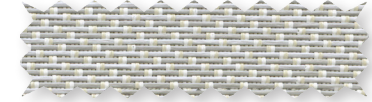
P26 Chalk/Wheat - face
Chalk/Wheat - back



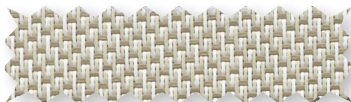
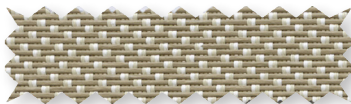
Q23 Whitesands - face
Whitesands - back



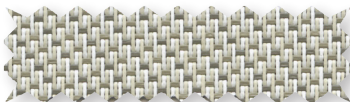
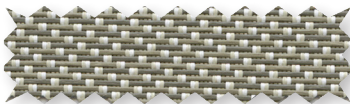
Q25 Birch - face
Birch - back



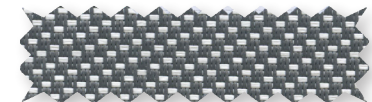
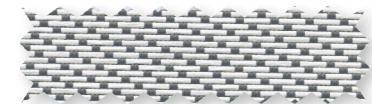
Q22 Flaxen - face
Flaxen - back



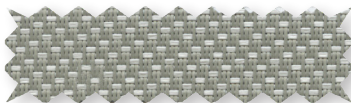
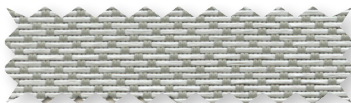
Q26 Cobblestone - face
Cobblestone - back



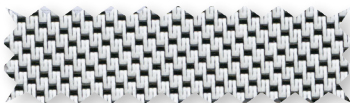
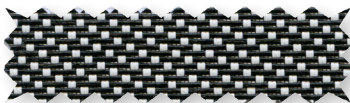
V03 Pewter/Chalk - face
Pewter/Chalk - back



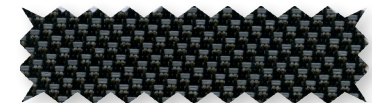
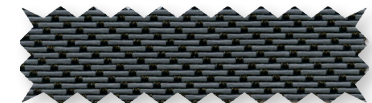
Q07 Kettal Grey - face
Kettal Grey - back



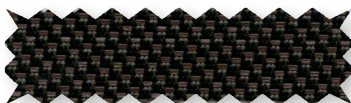
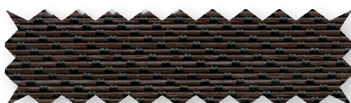
P25 Chalk/Black - face
Chalk/Black - back



V28 Slate - face
Slate - back



Q16 Tobacco - face
Tobacco - back



The unique twill weave of Styles 4901 and 4903 creates two fabrics in one, as distinct yet complimentary colors are exposed on the face and back.

Test data for solar heat gain and glare are shown for each side to demonstrate the fabrics performance based on orientation.

*Colors may vary based on individual computer settings and should only be used for general reference.

Code	Color	SOLAR OPTICAL PROPERTIES				SHGC/G VALUE g-tot (glass & blind)	
		TS	RS	AS	TV	SINGLE 1/4 CL	INSULATING 1 HA
STYLE 4901 - 1%							
P06	Chalk	9	83	8	7	0.18	0.17
P25	Chalk/Black - face	1	22	77	1	0.50	0.32
P25	Chalk/Black - back	1	54	45	1	0.33	0.24
P26	Chalk/Wheat - face	6	65	29	6	0.28	0.22
P26	Chalk/Wheat - back	6	75	19	6	0.22	0.19
Q07	Kettal Grey - face	3	48	49	3	0.37	0.26
Q07	Kettal Grey - back	3	37	60	3	0.43	0.29
Q16	Tobacco - face	2	8	90	2	0.58	0.36
Q16	Tobacco - back	2	6	92	2	0.59	0.37
Q22	Flaxen - face	3	42	55	3	0.40	0.27
Q22	Flaxen - back	3	57	40	3	0.31	0.23
Q23	Whitesands - face	7	65	28	6	0.28	0.22
Q23	Whitesands - back	7	67	26	6	0.27	0.21
Q25	Birch - face	5	57	38	4	0.32	0.23
Q25	Birch - back	5	64	31	4	0.28	0.22
Q26	Cobblestone - face	3	36	61	4	0.43	0.29
Q26	Cobblestone - back	3	55	42	4	0.33	0.24
Q27	Soft Grey	5	58	37	4	0.31	0.23
V03	Pewter/Chalk - face	3	56	41	4	0.32	0.23
V03	Pewter/Chalk - back	3	30	67	4	0.46	0.30
V10	Ebony	1	5	94	1	0.59	0.36
V28	Slate - face	2	11	87	3	0.57	0.36
V28	Slate - back	2	8	90	3	0.58	0.36
STYLE 4903 - 3%							
P06	Chalk	11	81	8	10	0.19	0.17
P25	Chalk/Black - face	3	25	72	3	0.49	0.32
P25	Chalk/Black - back	3	56	41	3	0.32	0.23
P26	Chalk/Wheat - face	9	65	26	9	0.28	0.22
P26	Chalk/Wheat - back	9	73	18	9	0.23	0.19
Q07	Kettal Grey - face	4	47	49	5	0.37	0.26
Q07	Kettal Grey - back	4	37	59	5	0.43	0.29
Q16	Tobacco - face	3	8	89	4	0.58	0.37
Q16	Tobacco - back	3	6	91	4	0.59	0.37
Q22	Flaxen - face	6	43	51	7	0.40	0.27
Q22	Flaxen - back	6	57	37	7	0.32	0.23
Q23	Whitesands - face	9	63	28	8	0.30	0.23
Q23	Whitesands - back	9	67	24	8	0.27	0.21
Q25	Birch - face	7	56	37	7	0.25	0.24
Q25	Birch - back	7	63	30	7	0.29	0.22
Q26	Cobblestone - face	4	38	58	4	0.43	0.29
Q26	Cobblestone - back	4	56	40	4	0.32	0.23
Q27	Soft Grey	8	57	35	8	0.32	0.23
V03	Pewter/Chalk - face	4	53	43	5	0.34	0.24
V03	Pewter/Chalk - back	4	29	67	5	0.47	0.30
V10	Ebony	3	5	92	5	0.60	0.37
V28	Slate - face	3	12	85	4	0.55	0.35
V28	Slate - back	3	8	89	4	0.58	0.37



Microban® antimicrobial protection inhibits the growth of stain-causing bacteria, mold and mildew on the shade.



PRODUCT CERTIFIED FOR LOW CHEMICAL EMISSIONS
UL.COM/GG
UL 2818



MIF Seal of Approval



TS = Solar Transmittance
RS = Solar Reflectance
AS = Solar Absorption
TV = Visual Transmittance

SHGC = Solar Heat Gain Coefficient

1/4 CL = 1/4" Clear Glass
1 HA = 1" Heat Absorbing Glass

Fabrics Installed Internally
Zero-Degree Profile Angle

For additional performance values, test references and technical definitions visit us at www.phifer.com.

STYLE 4901 / 4903 SPECIFICATIONS

Form follows function in this unique combination of color and weave. Using thin and light weight vinyl-coated polyester yarns, Styles 4901 and 4903 are as versatile as they are beautiful. Styles 4901 and 4903 can also be used in exterior shading systems.

FIRE CLASSIFICATION	California U.S. Title 19 (small scale)	NFPA 701 TM#1 (small scale)		
	NFPA 101 (Class A Rating) BS 5867 Part 2 Type B Performance CAN/ULC-S 109-03 (large and small scale)	IBC Section 803.1.1 (Class A Rating) NFPA 701 TM#2 (large scale) CAN/CGSB2-4.162-M80		
BACTERIA AND FUNGAL RESISTANCE	ASTM E 2180	ASTM G21	AATCC30 Part 3	ASTM D 3273
	GREENGUARD Mold and Bacteria Standard ASTM 6329 includes Microban antimicrobial additives			
ENVIRONMENTAL CERTIFICATION	GREENGUARD	GREENGUARD Gold		
	Certified to these standards for low chemical emissions into indoor air during product usage			
LEAD FREE	RoHS/Directive 2002/95/EC	REACH (EC 1907/2006) compliant		
	ANSI/WCMA A 100.1-2007 for lead content US Consumer Product Safety Commission Section 101			
WARRANTY	10-year interior	5-year exterior		
ACOUSTICAL PERFORMANCE	NRC (Noise Reduction Coefficient) and SAA (Sound Absorption Average) tested in accordance with ASTM C423-09a			
UV PROTECTION	Seal of Approval by the Melanoma International Foundation (MIF) for effectiveness in preventing sun damage to the skin or eyes			

STYLE	4901	4903
WIDTHS	63" and 98" 160.0 cm and 248.9 cm	63" and 98" 160.0 cm and 248.9 cm
ROLL LENGTH	30 Linear Yards 27.4 m	30 Linear Yards 27.4 m
COMPOSITION	17% Polyester 83% Vinyl on Polyester	17% Polyester 83% Vinyl on Polyester
MESH WEIGHT	16.2 oz/yd ² 549.27 g/m ²	14.9 oz/yd ² 505.20 g/m ²
FABRIC THICKNESS	0.028 in 0.71 mm	0.027 in 0.69 mm
OPENNESS FACTOR	Approximately 1%	Approximately 3%
UV BLOCKAGE	Approximately 99%	Approximately 97%
ACOUSTICAL VALUE	NRC .60 / SAA .59	NRC .25 / SAA .25



P. O. Box 1700 • Tuscaloosa, Alabama 35403-1700 USA
 Phone: 205.345.2120 • FAX: 205.391.0799
 Toll Free USA/Canada: 1.800-221.5497
 www.phifer.com • ISO Registered



© SheerWeave is a registered trademark of PHIFER INCORPORATED.
 © MICROBAN is a registered trademark of Microban Products Company.
 ™ UL, the UL logos and the UL mark are trademarks of UL LLC.
 Cover photo courtesy of HUNTER DOUGLAS, South America.
 © PHIFER INCORPORATED V16 3033840