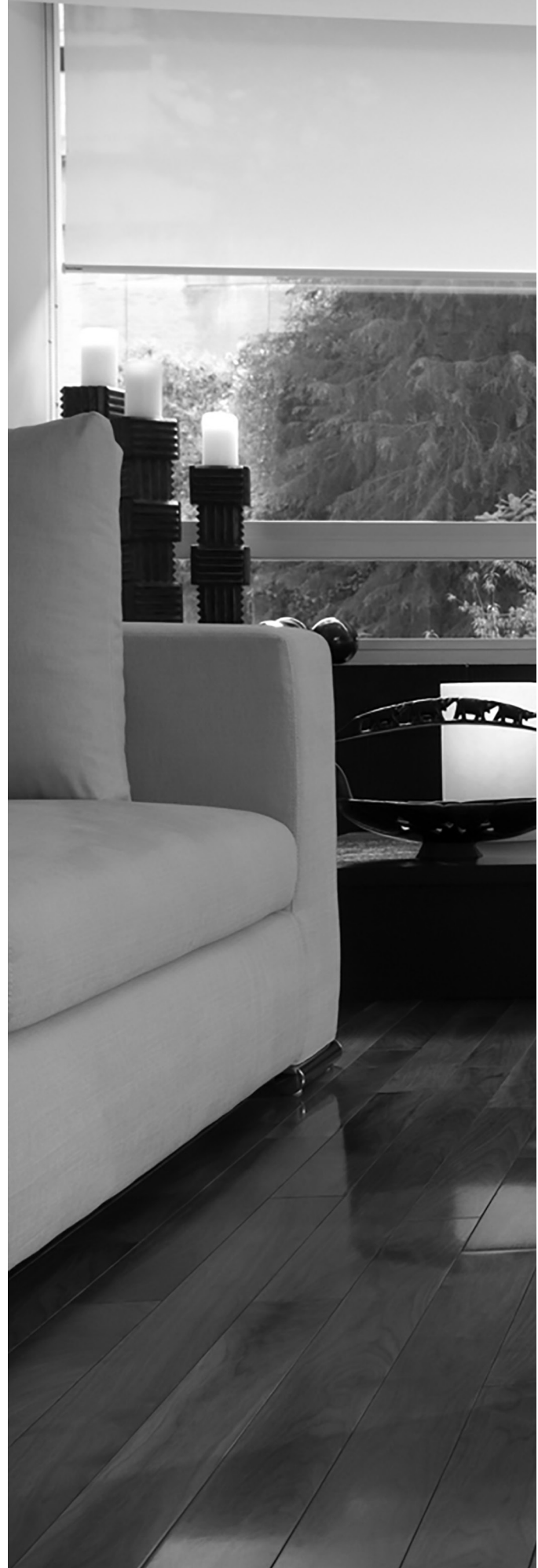




STYLE
7400 / 7450

7400 - BLACKOUT FABRIC
7450 - LIGHT-FILTERING FABRIC

WEAVING
EXCELLENCE
WITH
INNOVATION



Code	Color	SOLAR OPTICAL PROPERTIES				SHGC/G VALUE	
		TS	RS	AS	TV	<i>SINGLE</i> 1/4 CL	<i>INSULATING</i> 1 HA
STYLE 7400 - BLACKOUT							
U80	Cotton	0	64	36	0	0.27	0.21
U87	Flint	0	64	36	0	0.27	0.21



PRODUCT CERTIFIED FOR
LOW CHEMICAL EMISSIONS
UL.COM/GG
UL 2818



MIF Seal of Approval
(Style 7400)



(Style 7400)

TS = Solar Transmittance
RS = Solar Reflectance
AS = Solar Absorptance
TV = Visual Transmittance

SHGC = Solar Heat Gain Coefficient

1/4 CL = 1/4" Clear Glass
1 HA = 1" Heat Absorbing Glass

Fabrics Installed Internally
Zero-Degree Profile Angle

For additional performance values, test references and technical definitions visit us at www.phifer.com.

U80 Cotton



U81 Parchment



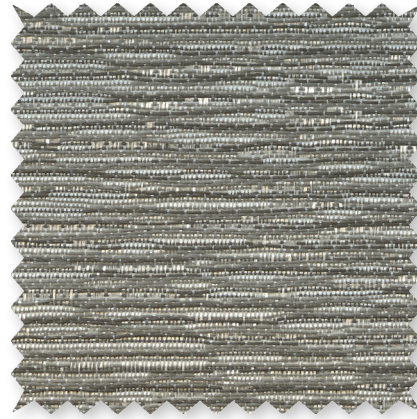
U82 Sesame



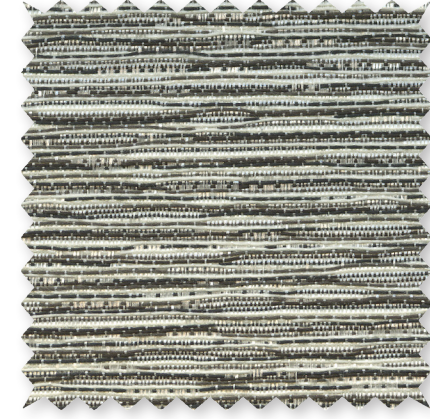
U83 Pebble



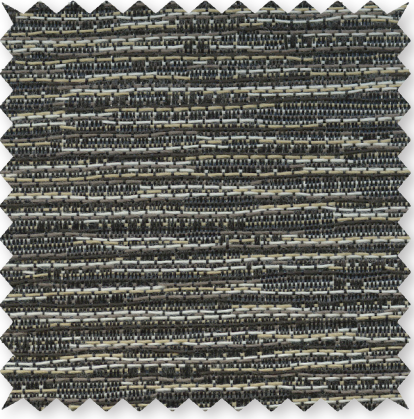
U85 Shale



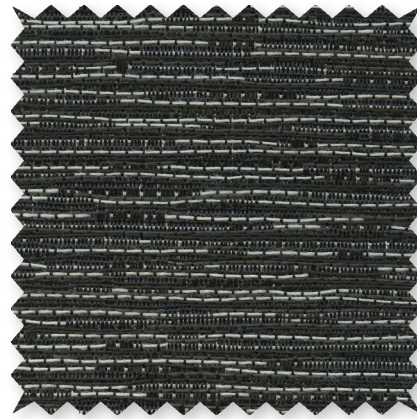
U84 Seagrass



U86 Spice



U87 Flint



*Colors may vary based on individual computer settings and should only be used for general reference.

STYLE 7400 / 7450 SPECIFICATIONS

A picture of refined elegance, Style 7400 layers a subtle textured pattern over a soft, luxurious backing for total light blockage. Offering the face fabric of Style 7400, Style 7450 filters natural light while illuminating interior spaces. These fabrics are suitable for roller shades, Roman shades and panel track systems.

STYLE 7400 FIRE CLASSIFICATION	California U.S. Title 19 (small scale)	NFPA 701 TM#1 (small scale)
STYLE 7450 FIRE CLASSIFICATION	California Technical Bulletin 117E	
BACTERIA AND FUNGAL RESISTANCE	ASTM G21-96	AATCC 174-1998 Part II and III
ENVIRONMENTAL CERTIFICATION	GREENGUARD	GREENGUARD Gold
	Certified to these standards for low chemical emissions into indoor air during product usage	
LEAD FREE	RoHS/Directive 2002/95/EC ANSI/WCMA A 100.1-2007 for lead content US Consumer Product Safety Commission Section 101	
WARRANTY	5-year interior	
ACOUSTICAL PERFORMANCE	NRC (Noise Reduction Coefficient) and SAA (Sound Absorption Average) tested in accordance with ASTM C423-09a	
UV PROTECTION	Style 7400 received the Seal of Approval by the Melanoma International Foundation (MIF) for effectiveness in preventing sun damage to the skin or eyes	
CLEANING INSTRUCTIONS	Fabric should be regularly dusted/vacuumed as appropriate. If commercial spot cleaners are used, they must first be tested and allowed to dry on an inconspicuous area to ensure compatibility.	
	<i>Railroading this fabric is not recommended.</i>	
	<i>Colors may vary slightly from swatch samples. All variations are within industry standards.</i>	

STYLE	7400	7450
WIDTHS	118" 300 cm	118" 300 cm
ROLL LENGTH	30 Linear Yards 27.4 m	30 Linear Yards 27.4 m
COMPOSITION	100% Polyester with Acrylic Foamed Backing	100% Polyester with Acrylic Coating
MESH WEIGHT	12.53 oz/yd ² 425 g/m ²	6.19 oz/yd ² 210 g/m ²
FABRIC THICKNESS	0.029 in 0.74 mm	0.0118 in 0.30 mm
OPENNESS FACTOR	Opaque	Light-filtering
ACOUSTICAL VALUE	NRC .05 / SAA .03	NRC .25 / SAA .25

PHIFER
INCORPORATED

P. O. Box 1700 • Tuscaloosa, Alabama 35403 -1700 USA
Phone: 205.345.2120 • FAX: 205.391.0799
Toll Free USA/Canada: 1.800.221.5497
phifer.com • ISO Registered



© SheerWeave is a registered trademark of PHIFER INCORPORATED.
™ UL, the UL logos and the UL mark are trademarks of UL LLC.
Photo courtesy of Hunter Douglas, South America.
© PHIFER INCORPORATED V17 3035029