



STYLE  
2500 / 2410 / 2390 / 2360

---

WEAVING  
EXCELLENCE  
WITH  
INNOVATION



| Code                    | Color             | SOLAR OPTICAL PROPERTIES |    |    |    | SHGC/G VALUE<br>g-tot (glass & blind) |                    |
|-------------------------|-------------------|--------------------------|----|----|----|---------------------------------------|--------------------|
|                         |                   | TS                       | RS | AS | TV | SINGLE<br>1/4 CL                      | INSULATING<br>1 HA |
| <b>STYLE 2500 - 1%</b>  |                   |                          |    |    |    |                                       |                    |
| P12                     | Oyster            | 15                       | 68 | 17 | 13 | 0.28                                  | 0.22               |
| P13                     | Oyster/Beige      | 10                       | 60 | 30 | 9  | 0.31                                  | 0.23               |
| P14                     | Oyster/Pearl Gray | 7                        | 50 | 43 | 6  | 0.37                                  | 0.25               |
| Q20                     | Beige             | 7                        | 50 | 43 | 6  | 0.37                                  | 0.25               |
| Q21                     | Beige/Pearl Gray  | 5                        | 42 | 53 | 5  | 0.40                                  | 0.28               |
| V20                     | Pearl Gray        | 3                        | 32 | 65 | 3  | 0.45                                  | 0.30               |
| V21                     | Charcoal          | 1                        | 4  | 95 | 1  | 0.60                                  | 0.37               |
| V22                     | Charcoal/Gray     | 2                        | 8  | 90 | 3  | 0.58                                  | 0.36               |
| V24                     | Charcoal/Chestnut | 1                        | 6  | 93 | 1  | 0.59                                  | 0.37               |
| V32                     | Charcoal/Alpaca   | 1                        | 16 | 83 | 2  | 0.54                                  | 0.34               |
| <b>STYLE 2410 - 3%</b>  |                   |                          |    |    |    |                                       |                    |
| P12                     | Oyster            | 17                       | 64 | 19 | 12 | 0.30                                  | 0.23               |
| P13                     | Oyster/Beige      | 11                       | 55 | 34 | 8  | 0.34                                  | 0.24               |
| P14                     | Oyster/Pearl Gray | 9                        | 44 | 47 | 7  | 0.40                                  | 0.27               |
| Q20                     | Beige             | 10                       | 48 | 42 | 7  | 0.38                                  | 0.26               |
| Q21                     | Beige/Pearl Gray  | 7                        | 39 | 54 | 5  | 0.43                                  | 0.29               |
| V20                     | Pearl Gray        | 6                        | 31 | 63 | 5  | 0.46                                  | 0.30               |
| V21                     | Charcoal          | 3                        | 3  | 94 | 3  | 0.61                                  | 0.37               |
| V22                     | Charcoal/Gray     | 3                        | 9  | 88 | 3  | 0.57                                  | 0.36               |
| V24                     | Charcoal/Chestnut | 3                        | 6  | 91 | 3  | 0.59                                  | 0.37               |
| V32                     | Charcoal/Alpaca   | 4                        | 20 | 76 | 5  | 0.52                                  | 0.33               |
| <b>STYLE 2390 - 5%</b>  |                   |                          |    |    |    |                                       |                    |
| P12                     | Oyster            | 21                       | 61 | 18 | 14 | 0.33                                  | 0.23               |
| P13                     | Oyster/Beige      | 17                       | 54 | 29 | 12 | 0.36                                  | 0.25               |
| P14                     | Oyster/Pearl Gray | 14                       | 45 | 41 | 10 | 0.40                                  | 0.28               |
| Q20                     | Beige             | 14                       | 47 | 39 | 10 | 0.39                                  | 0.27               |
| Q21                     | Beige/Pearl Gray  | 11                       | 38 | 51 | 9  | 0.44                                  | 0.29               |
| V20                     | Pearl Gray        | 10                       | 31 | 59 | 9  | 0.47                                  | 0.30               |
| V21                     | Charcoal          | 4                        | 4  | 92 | 5  | 0.60                                  | 0.37               |
| V22                     | Charcoal/Gray     | 5                        | 9  | 86 | 6  | 0.58                                  | 0.36               |
| V24                     | Charcoal/Chestnut | 6                        | 6  | 88 | 6  | 0.60                                  | 0.37               |
| V32                     | Charcoal/Alpaca   | 7                        | 18 | 75 | 9  | 0.54                                  | 0.34               |
| <b>STYLE 2360 - 10%</b> |                   |                          |    |    |    |                                       |                    |
| P12                     | Oyster            | 27                       | 57 | 16 | 21 | 0.37                                  | 0.25               |
| P13                     | Oyster/Beige      | 24                       | 51 | 25 | 19 | 0.39                                  | 0.27               |
| P14                     | Oyster/Pearl Gray | 20                       | 45 | 35 | 16 | 0.42                                  | 0.28               |
| Q20                     | Beige             | 19                       | 44 | 37 | 16 | 0.42                                  | 0.28               |
| Q21                     | Beige/Pearl Gray  | 17                       | 39 | 44 | 15 | 0.44                                  | 0.30               |
| V20                     | Pearl Gray        | 16                       | 30 | 54 | 14 | 0.49                                  | 0.31               |
| V21                     | Charcoal          | 10                       | 4  | 86 | 11 | 0.62                                  | 0.37               |
| V22                     | Charcoal/Gray     | 12                       | 8  | 80 | 14 | 0.60                                  | 0.37               |
| V24                     | Charcoal/Chestnut | 11                       | 5  | 84 | 12 | 0.61                                  | 0.37               |
| V32                     | Charcoal/Alpaca   | 12                       | 15 | 73 | 16 | 0.57                                  | 0.35               |

PROTECTION THAT LIVES ON  
**MICROBAN**

Microban® antimicrobial protection inhibits the growth of stain-causing bacteria, mold and mildew on the shade.



PRODUCT CERTIFIED FOR  
LOW CHEMICAL EMISSIONS  
UL.COM/GG  
UL 2818



MIF Seal of Approval



TS = Solar Transmittance  
RS = Solar Reflectance  
AS = Solar Absorptance  
TV = Visual Transmittance

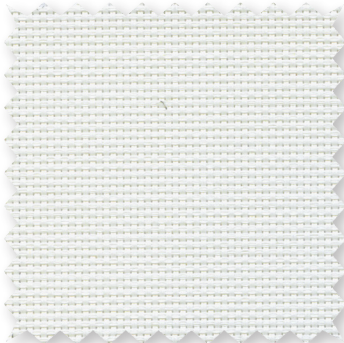
SHGC = Solar Heat Gain Coefficient

1/4 CL = 1/4" Clear Glass  
1 HA = 1" Heat Absorbing Glass

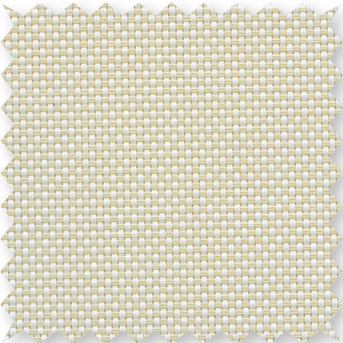
Fabrics Installed Internally  
Zero-Degree Profile Angle

For additional performance values, test references and technical definitions visit us at [www.phifer.com](http://www.phifer.com).

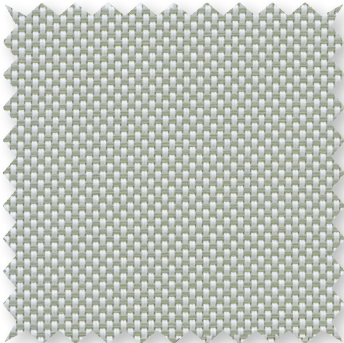
P12 Oyster



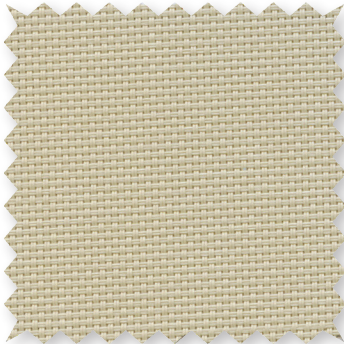
P13 Oyster/Beige



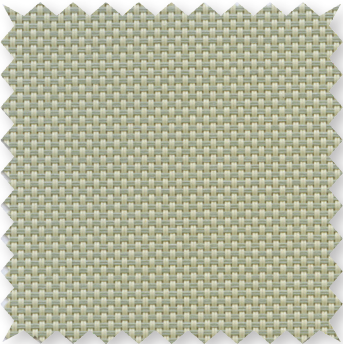
P14 Oyster/Pearl Gray



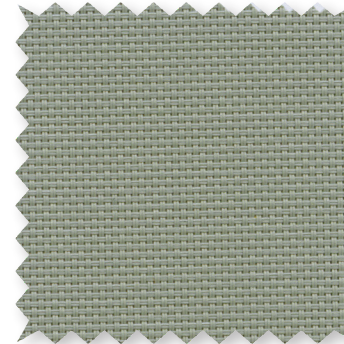
Q20 Beige



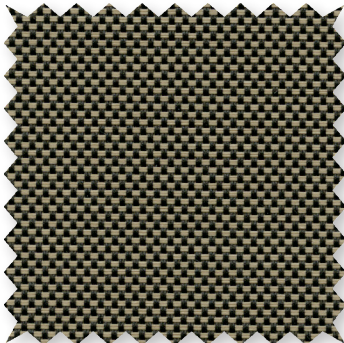
Q21 Beige/Pearl Gray



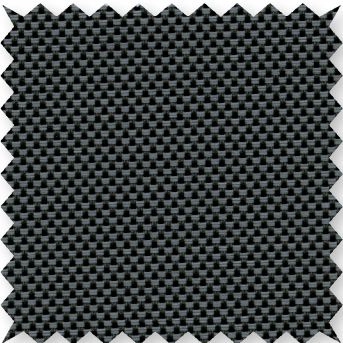
V20 Pearl Gray



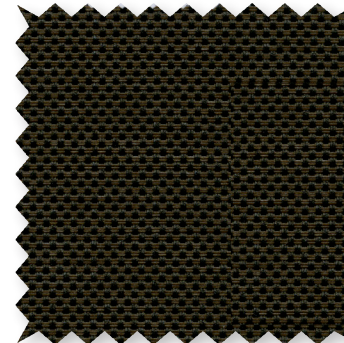
V32 Charcoal/Alpaca



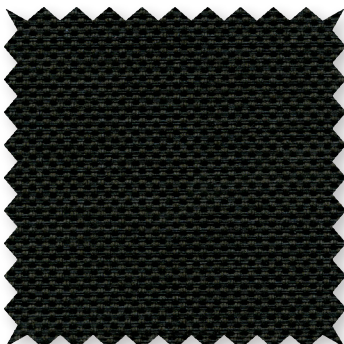
V22 Charcoal/Gray



V24 Charcoal/Chestnut



V21 Charcoal



\*Colors may vary based on individual computer settings and should only be used for general reference.

# STYLE 2500 / 2410 / 2390 / 2360 SPECIFICATIONS

Manufactured with ease of fabrication in mind, Styles 2500, 2410, 2390 and 2360 are full basketweaves designed expressly for those applications which require a more opaque and nondirectional fabric. Style 2500/2410/2390/2360 can also be used in exterior roller shades.

|                            |  |                                       |
|----------------------------|--|---------------------------------------|
| <b>FIRE CLASSIFICATION</b> | NFPA 701 TM#1 (small scale)            | BS 5867 Part 2 Type B Performance     |
|                            | NFPA 701 TM#2 (large scale)            | CAN/ULC-S 109 (large and small scale) |
|                            | NFPA 101 (Class A Rating)              | CAN/CGSB2-4.162-M80                   |
|                            | California U.S. Title 19 (small scale) | IBC Section 803.1.1 (Class A Rating)  |

*Fire classifications are subject to change. It is the user's responsibility to check for the most current fire ratings at phifer.com.*

|                                       |   |                                |                |             |          |
|---------------------------------------|---|--------------------------------|----------------|-------------|----------|
| <b>BACTERIA AND FUNGAL RESISTANCE</b> | ASTM E 2180   | ASTM G21                       | AATCC30 Part 3 | ASTM D 3273 | ASTM G22 |
|                                       | GREENGUARD Mold and Bacteria Standard ASTM 6329 includes Microban antimicrobial additives   |                                |                |             |          |
| <b>ENVIRONMENTAL CERTIFICATION</b>    | GREENGUARD  | GREENGUARD Gold                |                |             |          |
|                                       | Certified to these standards for low chemical emissions into indoor air during product usage  |                                |                |             |          |
| <b>LEAD FREE</b>                      | RoHS/Directive 2002/95/EC   | REACH (EC 1907/2006) compliant |                |             |          |
|                                       | ANSI/WCMA A 100.1-2007 for lead content   |                                |                |             |          |
|                                       | US Consumer Product Safety Commission Section 101   |                                |                |             |          |
| <b>WARRANTY</b>                       | 10-year interior  | 5-year exterior                |                |             |          |
|                                       | NRC (Noise Reduction Coefficient) and SAA (Sound Absorption Average) tested in accordance with ASTM C423-09a  |                                |                |             |          |
| <b>ACOUSTICAL PERFORMANCE</b>         |   |                                |                |             |          |
| <b>UV PROTECTION</b>                  | Seal of Approval by the Melanoma International Foundation (MIF) for effectiveness in preventing sun damage to the skin or eyes  |                                |                |             |          |
| <b>TRACKLESS</b>                      | TrackLess Technology minimizes the fiberglass yarns' inherent tendencies to track when being rolled up in a shade. With TrackLess Technology these same fabrics now track less, roll up straighter and reduce shade fabrication time. |                                |                |             |          |

| STYLE                   | 2500   | 2410   | 2390   | 2360  |
|-------------------------|--|--|--|---|
| <b>WIDTHS</b>           | 63", 98" and 126"<br>160 cm, 248.9 cm and 320 cm | 63", 98" and 126"<br>160 cm, 248.9 cm and 320 cm | 63", 98" and 126"<br>160 cm, 248.9 cm and 320 cm | 63" and 98"<br>160 cm and 248.9 cm              |
| <b>ROLL LENGTH</b>      | 30 Linear Yards<br>27.4 m                        | 30 Linear Yards<br>27.4 m                        | 30 Linear Yards<br>27.4 m                        | 30 Linear Yards<br>27.4 m                       |
| <b>COMPOSITION</b>      | 37% Fiberglass<br>63% Vinyl on Fiberglass        | 36% Fiberglass<br>64% Vinyl on Fiberglass        | 35% Fiberglass<br>65% Vinyl on Fiberglass        | 35% Fiberglass<br>65% Vinyl on Fiberglass       |
| <b>MESH WEIGHT</b>      | 16.2 oz/yd <sup>2</sup><br>549 g/m <sup>2</sup>  | 14.1 oz/yd <sup>2</sup><br>478 g/m <sup>2</sup>  | 11.8 oz/yd <sup>2</sup><br>400 g/m <sup>2</sup>  | 10.4 oz/yd <sup>2</sup><br>353 g/m <sup>2</sup> |
| <b>FABRIC THICKNESS</b> | 0.024 in<br>0.61 mm                              | 0.020 in<br>0.51 mm                              | 0.017 in<br>0.43 mm                              | 0.019 in<br>0.48 mm                             |
| <b>OPENNESS FACTOR</b>  | Approximately 1%                                 | Approximately 3%                                 | Approximately 5%                                 | Approximately 10%                               |
| <b>UV BLOCKAGE</b>      | Approximately 99%                                | Approximately 97%                                | Approximately 95%                                | Approximately 90%                               |
| <b>ACOUSTICAL VALUE</b> | NRC .55 / SAA .54                                | NRC .20 / SAA .21                                | NRC .10 / SAA .12                                | NRC .05 / SAA .06                               |

**PHIFER**  
INCORPORATED

P. O. Box 1700 • Tuscaloosa, Alabama 35403 -1700 USA  
Phone: 205.345.2120 • FAX: 205.391.0799  
Toll Free USA/Canada: 1.800.221.5497  
phifer.com • ISO Registered



© SheerWeave is a registered trademark of PHIFER INCORPORATED.  
© MICROBAN is a registered trademark of Microban Products Company.  
™ UL, the UL logos and the UL mark are trademarks of UL LLC.  
Cover photo courtesy of GRUPO AMERICAN CLASSIC, Monterrey, México.  
© PHIFER INCORPORATED V18 101718 3033832