



STYLE
4600 / 4500

WEAVING
EXCELLENCE
WITH
INNOVATION



Code	Color	SOLAR OPTICAL PROPERTIES				SHGC/G VALUE	
		TS	RS	AS	TV	SINGLE 1/4 CL	INSULATING 1 HA
STYLE 4600 - 3%							
P06	Chalk	10	74	16	9	0.23	0.19
P10	Granite	5	43	52	7	0.40	0.27
Q59	Ecru	7	58	35	8	0.32	0.23
Q60	Golden Sand	6	37	57	7	0.44	0.29
U32	Linen	8	64	28	8	0.29	0.22
V07	Pewter	5	31	64	7	0.46	0.30
V10	Ebony	3	3	94	5	0.61	0.37
V44	Sandstone	5	39	56	6	0.42	0.29
V95	Cappuccino	4	20	76	6	0.52	0.33
V96	Dark Bronze	4	5	91	7	0.60	0.37
STYLE 4500 - 5%							
P06	Chalk	12	74	14	11	0.23	0.19
P10	Granite	6	47	47	8	0.37	0.26
Q59	Ecru	9	56	35	9	0.33	0.24
Q60	Golden Sand	7	37	56	8	0.44	0.29
U32	Linen	11	63	26	12	0.30	0.23
V07	Pewter	6	30	64	9	0.47	0.30
V10	Ebony	5	3	92	7	0.61	0.37
V44	Sandstone	8	40	52	9	0.42	0.29
V95	Cappuccino	6	18	76	9	0.53	0.34
V96	Dark Bronze	7	5	88	10	0.61	0.37



PROTECTION THAT LIVES ON 
MICROBAN[®]
 Microban[®] antimicrobial protection inhibits the growth of stain-causing bacteria, mold and mildew on the shade.



PRODUCT CERTIFIED FOR
 LOW CHEMICAL EMISSIONS
 UL.COM/GG
 UL 2818



MIF Seal of Approval



TS = Solar Transmittance
 RS = Solar Reflectance
 AS = Solar Absorbance
 TV = Visual Transmittance

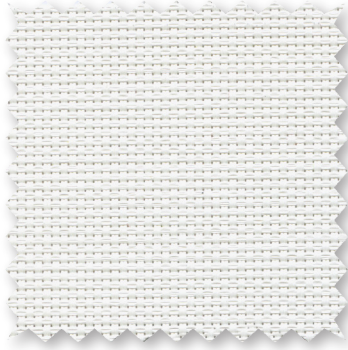
SHGC = Solar Heat Gain Coefficient

1/4 CL = 1/4" Clear Glass
 1 HA = 1" Heat Absorbing Glass

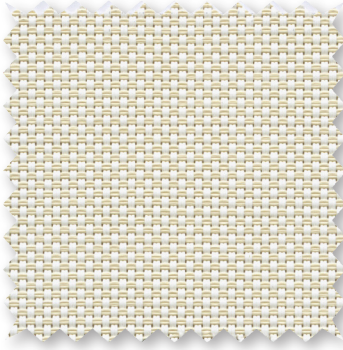
Fabrics Installed Internally
 Zero-Degree Profile Angle

For additional performance values, test references and technical definitions visit us at www.phifer.com.

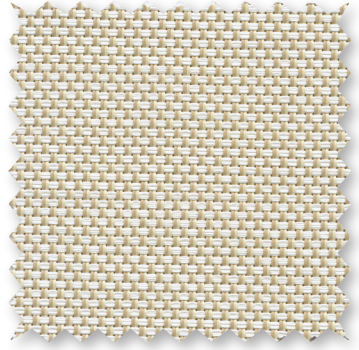
P06 **Chalk**



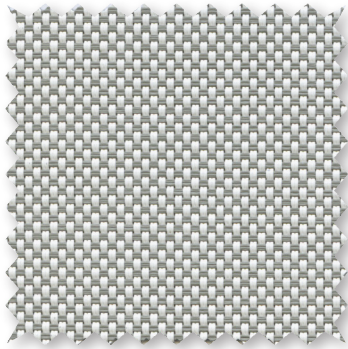
U32 **Linen**



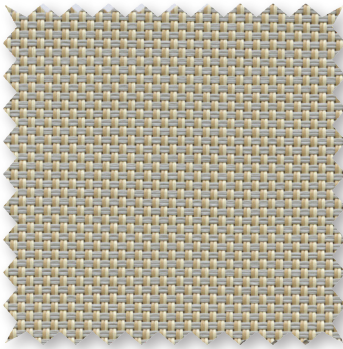
Q59 **Ecru**



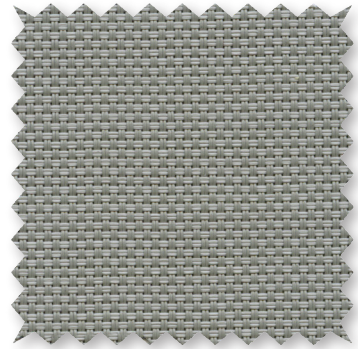
P10 **Granite**



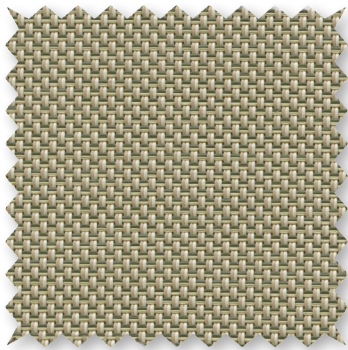
V44 **Sandstone**



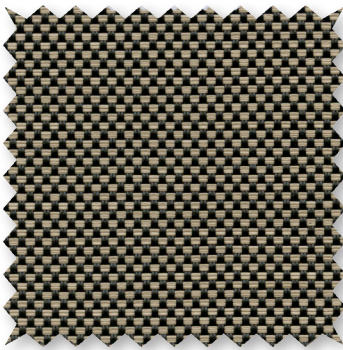
V07 **Pewter**



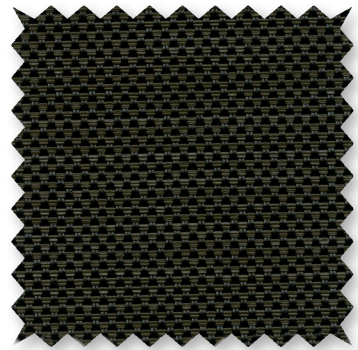
Q60 **Golden Sand**



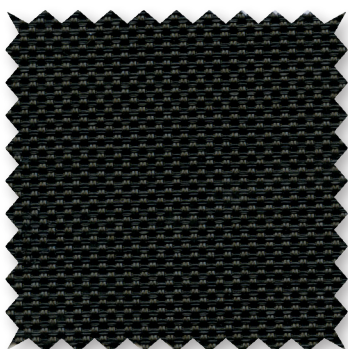
V95 **Cappuccino**



V96 **Dark Bronze**



V10 **Ebony**



*Colors may vary based on individual computer settings and should only be used for general reference.

STYLE 4600 / 4500 SPECIFICATIONS

Using advances in polyester yarn development, Styles 4600 and 4500 are thinner, lighter weight vinyl coated polyester fabrics offered in 10 decorator colors. Woven in a 2x2 basketweave, these fabrics are ideal for applications where a more opaque and non-directional fabric is needed. Style 4600/4500 can also be used in exterior shading systems.

FIRE CLASSIFICATION	California U.S. Title 19 (small scale)	BS 5867 Part 2 Type B Performance
	NFPA 701 TM#1 (small scale)	CAN/ULC-S 109 (large and small scale)
	NFPA 701 TM#2 (large scale)	IBC Section 803.1.1 (Class A Rating)
	NFPA 101 (Class A Rating)	

Fire classifications are subject to change. It is the user's responsibility to check for the most current fire ratings at phifer.com.

BACTERIA AND FUNGAL RESISTANCE	ASTM E 2180	ASTM G21	AATCC30 Part 3	ASTM D 3273	ASTM G22
	GREENGUARD Mold and Bacteria Standard ASTM 6329 includes Microban antimicrobial additives				

ENVIRONMENTAL CERTIFICATION	GREENGUARD	GREENGUARD Gold
	Certified to these standards for low chemical emissions into indoor air during product usage	

LEAD FREE	RoHS/Directive 2002/95/EC	REACH (EC 1907/2006) compliant
	ANSI/WCMA A 100.1-2007 for lead content	
	US Consumer Product Safety Commission Section 101	

WARRANTY	10-year interior	5-year exterior
-----------------	------------------	-----------------

ACOUSTICAL PERFORMANCE	NRC (Noise Reduction Coefficient) and SAA (Sound Absorption Average) tested in accordance with ASTM C423-09a
-------------------------------	--

UV PROTECTION	Seal of Approval by the Melanoma International Foundation (MIF) for effectiveness in preventing sun damage to the skin or eyes
----------------------	--

STYLE	4600	4500
WIDTHS	63", 98" and 126" 160 cm, 248.9 cm and 320 cm	63", 98" and 126" 160 cm, 248.9 cm and 320 cm
ROLL LENGTH	30 Linear Yards 27.4 m	30 Linear Yards 27.4 m
COMPOSITION	22% Polyester 78% Vinyl on Polyester	17% Polyester 83% Vinyl on Polyester
MESH WEIGHT	17.4 oz/yd ² 589.97 g/m ²	14.4 oz/yd ² 488.25 g/m ²
FABRIC THICKNESS	0.030 in 0.76 mm	0.024 in 0.61 mm
OPENNESS FACTOR	Approximately 3%	Approximately 5%
UV BLOCKAGE	Approximately 97%	Approximately 95%
ACOUSTICAL VALUE	NRC .20 / SAA .23	NRC .15 / SAA .17

PHIFER
INCORPORATED

P. O. Box 1700 • Tuscaloosa, Alabama 35403-1700 USA
Phone: 205.345.2120 • FAX: 205.391.0799
Toll Free USA/Canada: 1.800.221.5497
phifer.com • ISO Registered



© SheerWeave is a registered trademark of PHIFER INCORPORATED.
© MICROBAN is a registered trademark of Microban Products Company.
™ UL, the UL logos and the UL mark are trademarks of UL LLC.
Photo courtesy of Rielamericano, Buenos Aires, Argentina.
© PHIFER INCORPORATED V18 101718 303383S